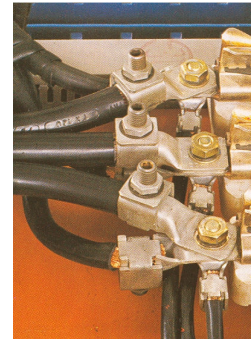




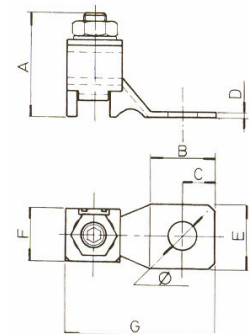
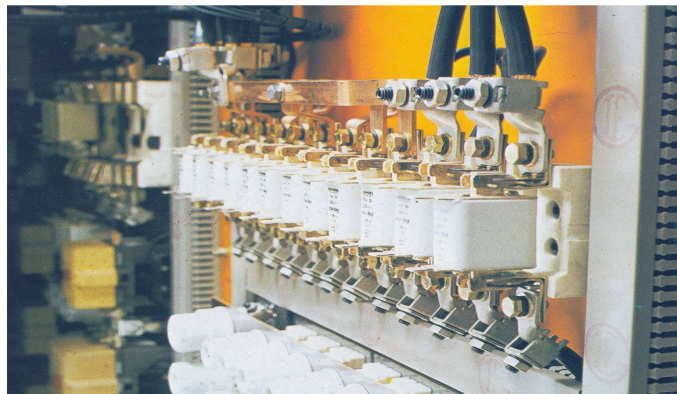
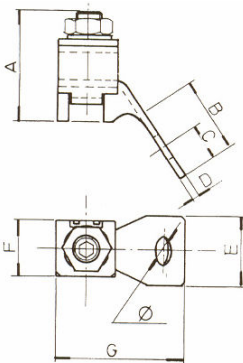
TERMINALES BIMETÁLICOS DE PRESIÓN A TORNILLO (REUTILIZABLES) SERIE -T



★ PROTECCIÓN AISLANTE INCORPORADA



TERMINAL DE LATÓN ESTAÑADO, APTO PARA CONEXIONES A CABLES DE COBRE O ALUMINIO



CABLE Al/Cu mm ²	A	B	C	D	E	F	G	Ø	MATERIAL / ACABADO	REFERENCIA GIE		
PALA PLANA (ENTRADA RECTA)												
2,5~6	15,5	11,5	6,0	1,0	10,3	7,5	27,5	5	LATÓN ESTAÑADO	T-2	100	
6~16	19,0	14,0	7,0	1,0	14,0	9,5	30,0	6		T-4		
16~35	25,5	18,0	9,5	1,5	17,5	14,0	40,0	7		★ T-6		
25~50	33,0	21,0	11,0	2,0	20,5	17,0	48,0	9		★ T-8		50
50~80	41,0	26,0	13,5	2,5	25,5	22,0	60,0	10		★ T-10		25
80~125	50,0	31,0	16,0	3,0	30,0	27,5	72,5	12		★ T-12		20
PALA ACODADA (ENTRADA 45°)												
2,5~6	15,5	11,5	6,0	1,0	10,3	7,5	24,5	5	LATÓN ESTAÑADO	T-2-C	100	
6~16	19,0	14,0	7,0	1,0	14,0	9,5	23,0	6		T-4-C		
16~35	25,5	18,0	9,5	1,5	17,5	14,0	34,0	7		★ T-6 / C		
25~50	33,0	21,0	11,0	2,0	20,5	17,0	40,0	9		★ T-8 / C		50
50~80	41,0	26,0	13,5	2,5	25,5	22,0	48,0	10		★ T-10 / C		25
80~125	50,0	31,0	16,0	3,0	30,0	27,5	61,0	12		★ T-12 / C		20

