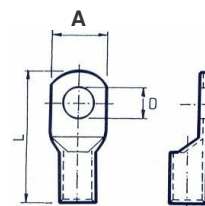




TERMINALES TUBULARES NORMA. EN COBRE ESTAÑADO SERIE - TN



CABLE mm ²	Dimensiones en mm		Ø D	REFERENCIA GIE	☒	CABLE mm ²	Dimensiones en mm		Ø D	REFERENCIA GIE	☒										
	A	L					A	L													
1,5	8,0	17,0	4,2	TN-1,5/4	100 ∴ 2000	70	21,0	59,0	15,0	★TN-70/14	50 ∴ 100										
	8,0	17,0	5,2	★TN-1,5/5			26,0	63,0	17,0	★TN-70/16											
2,5	8,0	19,0	4,2	★TN-2,5/4		95	70	25,0	57,0	5,2		★TN-95/5	50 ∴ 100								
	10,0	19,0	5,2	TN-2,5/5				25,0	57,0	6,5		★TN-95/6									
4	10,0	19,0	6,5	★TN-2,5/6		120	95	25,0	57,0	8,4		★TN-95/8		25 ∴ 50							
	10,0	20,0	4,2	★TN-4/4				25,0	57,0	10,5		TN-95/10									
6	10,0	20,0	5,2	TN-4/5		100	120	25,0	57,0	13,2		TN-95/12			10 ∴ 40						
	10,0	20,0	6,5	★TN-4/6				25,0	65,5	15,0		TN-95/14									
10	10,0	25,0	4,2	★TN-6/4		150	120	27,0	69,5	17,0		★TN-95/16				10 ∴ 30					
	10,0	25,0	5,2	TN-6/5				29,5	77,5	21,0		★TN-95/20									
16	12,0	25,0	6,5	TN-6/6		100	150	28,0	66,0	8,4		★TN-120/8					10 ∴ 40				
	12,0	25,0	8,4	★TN-6/8				28,0	66,0	10,5		★TN-120/10									
25	12,0	25,0	8,4	★TN-6/8		1000	150	28,0	66,0	13,2		TN-120/12						10 ∴ 30			
	16,0	34,0	10,5	★TN-6/10				28,0	66,0	15,0		TN-120/14									
35	12,0	26,0	5,2	★TN-10/5		100	185	28,0	66,0	17,0		TN-120/16							10 ∴ 20		
	12,0	26,0	6,5	TN-10/6				30,0	73,0	10,5		★TN-150/10									
50	12,0	26,0	8,4	TN-10/8		50	240	30,0	73,0	13,2		TN-150/12								5 ∴ 15	
	18,0	34,5	10,5	★TN-10/10				30,0	73,0	15,0		TN-150/14									
70	19,0	39,5	13,2	★TN-10/12		200	300	30,0	73,0	17,0		★TN-150/16									5 ∴ 10
	12,0	30,0	4,2	★TN-16/4				34,0	79,0	10,5		★TN-185/10									
100	12,0	30,0	5,2	★TN-16/5	50	400	34,0	79,0	13,2	★TN-185/12	2..4										
	12,0	30,0	6,5	★TN-16/6			34,0	79,0	15,0	TN-185/14											
150	12,0	30,0	8,4	TN-16/8	100	500	34,0	79,0	17,0	TN-185/16		1									
	15,0	30,0	10,5	TN-16/10			34,0	79,0	21,0	★TN-185/20											
200	20,0	42,5	13,2	★TN-16/12	400	240	38,0	93,0	10,5	★TN-240/10			5 ∴ 15								
	13,0	33,0	5,2	★TN-25/5			38,0	93,0	13,2	★TN-240/12											
250	13,0	33,0	6,5	★TN-25/6	100	300	38,0	93,0	15,0	TN-240/14				5 ∴ 10							
	18,0	33,0	8,4	TN-25/8			38,0	93,0	17,0	TN-240/16											
350	18,0	33,0	10,5	TN-25/10	50	400	38,0	93,0	19,0	★TN-240/18					5 ∴ 10						
	21,0	45,0	13,2	★TN-25/12			38,0	93,0	21,0	★TN-240/20											
500	15,0	38,0	6,5	★TN-35/6	200	500	43,0	100,0	13,2	★TN-300/12						5 ∴ 15					
	15,0	38,0	8,4	TN-35/8			43,0	100,0	15,0	★TN-300/14											
700	18,0	38,0	10,5	TN-35/10	100	630	43,0	100,0	17,0	TN-300/16							5 ∴ 10				
	18,0	47,5	13,2	★TN-35/12			43,0	100,0	19,0	TN-300/18											
1000	23,0	54,0	16,0	★TN-35/16	50	800	43,0	100,0	21,0	★TN-300/20								5 ∴ 10			
	29,0	72,0	18,0	★TN-35/18			52,0	116,0	13,2	★TN-400/12											
1500	29,0	72,0	20,0	★TN-35/20	200	1000	52,0	116,0	17,0	TN-400/16									5 ∴ 15		
	18,0	45,0	6,5	★TN-50/6			52,0	116,0	19,0	TN-400/18											
2000	18,0	45,0	8,4	TN-50/8	50	1000	52,0	116,0	21,0	★TN-400/20										5 ∴ 10	
	18,0	45,0	10,5	TN-50/10			56,0	126,0	17,0	★TN-500/16											
3000	18,0	45,0	13,2	TN-50/12	100	1000	56,0	126,0	19,0	TN-500/18	5 ∴ 10										
	25,0	55,5	15,0	★TN-50/14			56,0	126,0	21,0	TN-500/20											
4000	26,0	59,5	17,0	★TN-50/16	200	1000	65,0	140,0	19,0	TN-630/18		2..4									
	26,0	59,5	18,0	★TN-50/18			65,0	140,0	21,0	TN-630/20											
5000	21,0	53,0	6,5	★TN-70/6	50	1000	73,5	170,0		★TN-800			1								
	21,0	53,0	8,4	TN-70/8			81,0	200,0		★TN-1000											
6000	21,0	53,0	10,5	TN-70/10	100	1000								1							
	21,0	53,0	13,2	TN-70/12																	

★ Taladros inusuales (sobre demanda)

* Pala terminal sin taladrar

